

Please note refreshments are available in the room from 5.30pm

Agenda

1. Introductions and Apologies

County Councillor Clarke

To note who is attending and any apologies for absence.

2. Notes of the Meeting and Matters Arising from 13 January 2022 (Pages 1 - 10)

County Councillor Clarke

To agree for accuracy the notes of the meeting and receive any matters arising.

3. Corporate Parenting Strategy 2022-2026, Draft Promise and Objectives (45 mins) (Pages 11 - 20)

Andreas Feldhaar, Jane Hylton, Ralph Rushworth, Permanence Service, LCC

To review the Lancashire Corporate Parenting Strategy 2022-2026 and the draft Lancashire Promise, and to note the objectives outlined.

4. Update from the Four Corporate Parenting Board Priority Groups (10 mins)

Andreas Feldhaar, Permanence Service, LCC

To receive a progress update from the four Corporate Parenting Board Priority Groups since the last Board meeting.

5. Front Door, Assessment and Adolescent Services (15 mins) (Pages 21 - 34)

Chris Coyle, Front Door, Assessment and Adolescent Services (FAAS)

To receive a presentation about the work undertaken in Front Door, Assessment and Adolescent Services (FAAS).

6. Participation Team Update (20 mins)

Young people from LINX (Lancashire's Children in Care Council), April Rankin and Adam Riley, Participation Team, Child and Family Wellbeing Service, LCC

To receive a piece of work conducted by young people about:

- i) Supporting the recruitment and retention process for social workers in Children's Social Care.
- ii) Why it is good for a social worker to work with young people in Lancashire.

7. Any Other Business

County Councillor Clarke

To receive any other business.

8. Date and Time of Next Meeting

County Councillor Clarke

Wednesday, 11 May 2022, 6pm, County Hall, Preston.

Agenda Item 2

Lancashire County Council

Corporate Parenting Board

Minutes of the Meeting held on Thursday, 13th January, 2022 at 6.00 pm in
Zoom Virtual Meeting

Present: Members

| | |
|---|-----------------------------|
| County Councillor Stephen Clarke | - Lancashire County Council |
| County Councillor Ash Sutcliffe | - Lancashire County Council |
| County Councillor Jeff Couperthwaite | - Lancashire County Council |
| County Councillor Andrea Kay | - Lancashire County Council |
| County Councillor Rupert Swarbrick | - Lancashire County Council |
| County Councillor Julie Gibson | - Lancashire County Council |
| Liz Donnelly Nelson | - Adoption |
| Mary | - LINX Representative |
| Georgia | - LINX Representative |
| Emma | - LINX Representative |
| Chloe | - LINX Representative |

Co-opted members

| | |
|-------------------|---|
| Caroline Waldron | - East Lancashire CCG |
| Audrey Swann | - Vulnerable and Looked After Children, LCC |
| Andreas Feldhaar | - Permanence Service, LCC |
| Janice Laing | - Permanence Service, LCC |
| Moya McKinney | - Permanence Service - Leaving Care, LCC |
| Gina Power | - Permanence Service - Children in Our Care, LCC |
| Paul McIntyre | - Fostering, Adoption Lancashire & Blackpool and Residential Services, LCC |
| Catherine Brooks | - Child and Family Wellbeing Service, LCC |
| Brian Wood | - Child and Family Wellbeing Service, LCC |
| Adam Riley | - Child and Family Wellbeing Service |
| April Rankin | - Child and Family Wellbeing Service |
| Jennifer Donnelly | - Lancs 0-19, Virgin Care Ltd |

Other Attendees

| | |
|--------------------------------------|-----------------------------|
| County Councillor Cosima Towneley | - Lancashire County Council |
| Barbara Bath | - Children's Services, LCC |

| | |
|----------------|----------------------------|
| Brendan Lee | - Permanence Service, LCC |
| Tonya Harrison | - Permanence Service, LCC |
| Sam Gorton | - Democratic Services, LCC |

1. Introductions and Apologies

All were welcomed to the meeting and apologies were received from County Councillor Scott Smith, Graham Lindley, Julie Dawkins, Nicola Bamford, Stephen Young, Neil Drummond and Jo Swords.

Caroline Waldron was attending on behalf of Kirsty Byrne and Helen Hargreaves, Clinical Commissioning Groups.

2. Notes of the Meeting and Matters Arising from 24 November 2021

Resolved: That the minutes were agreed as an accurate record and there were no matters arising from them.

3. Lasting Homes Panel

Janice Laing and Tonya Harrison, Permanence Service, Lancashire County Council provided a brief overview on the Lasting Homes Panel, setting out key expectations and principles around the function and purpose of the new Panel which has replaced the Permanence Panel as the process for ratifying a child's home as permanent. The purpose of this item was to share awareness with the Board and its' corporate parenting partners of what is being done now, what was done previously and for the Board to ratify that the Protocol can be progressed.

The Lasting Home Panel Protocol [document](#) that was shared with the agenda, prior to the meeting is intended as a guide for social workers and managers. It will help define the pathways for inclusion of children and young people and their carers in Lancashire children's permanence process and make clear the decision-making points and roles and responsibilities of key stakeholders. The document also, provided further details on the:

- Role of Lasting Home Panel
- Scope of Panel
- Difference between Permanence Panel and the new Lasting Home Panel
- Membership and Governance
- Roles and Responsibilities of the Children in our Care Service

A [presentation](#) was also given to the Board on the 'Lasting Home' Permanence Panel Redesign and this was attached to the agenda. This detailed further information on:

- Project Aim: Evaluate the Current Permanence Panel
- Our Journey of Consultation
- 'Lasting Home' Panel Redesign

- Lasting Home Panel Process
- Lasting Home Panel Children's Guide
- Lasting Home Panel Teens Guide
- The Complete Package

Following the presentation, the Board raised the following questions/points:

It was noted that one of the areas, on the Teens Guide around considering Post 18 accommodation options, is links in to one of the key priorities of the Corporate Parenting Board, "Improving sufficiency and providing the right homes in the right places at the right time" and that County Councillors Gibson and Kay were leading on and they felt it would be useful to link in with the officers involved with the Lasting Homes Panel to ensure that the process is as seamless as possible and that the young people feel completely involved in that journey and the importance of a forever home for the young people.

It was highlighted that the partners involved in both the Permanence Panel and the new Lasting Homes Panel, felt that the new panel was a lot clearer, and they felt that they had more of a role and can contribute to something that is more positive and the involvement of the young people is key to this.

The role of the Corporate Parenting Board in this process is to challenge the Panel on a regular basis on indicators such as how many plans have been ratified throughout the process, how is the process going and feedback on how it is linking in with the four key priorities of the Board.

Resolved: That the Corporate Parenting Board ratified the process of the Lasting Homes Panel (page 50 of the agenda pack) and agreed to scrutinise its' performance and receive feedback at timely intervals.

4. Participation Team Update

Georgia, Mary, Chloe and Emma from LINX (Lancashire's Children in Care Council), April Ranking and Adam Riley, Child and Family Wellbeing Service, Lancashire County Council provided the Board with an update from the Care Leavers Forum. The young people gave an update on what the Forum will be focusing on over the next few months. Further details can be found in the presentation which is attached to these minutes on:

- Our agenda
- Education

It was noted that the Forum would like to:

- Look at education and how it can be more supportive to children and young people
- Continue to be involved with fostering and adoption and continue to work with the interview panels.

- Focus on how to find and secure a job and would like more help and support with writing a CV and developing interview skills.
- Get more mental health support in Lancashire that is easily accessible and good quality as the waiting lists for mental health support can be extensive.
- For meetings, such as Personal Education Plan (PEP) meetings and Children Looked After (CLA) meetings to not interfere with lessons, as this takes valuable time away from their education.
- Have more support and discussions about finance skills and how young people need to be supported with them. Young people need more of an understanding and support around the importance of saving money and how this can affect a person's finances.

One of the young people presenting at this Board was also attending the Education and Children Services Committee on 18 January 2022 representing children in care.

Young people have recently had a meeting with Fostering and Adoption to ensure that more youth voices are used in the marketing for this service. Young people will be involved in updating panel questions for new foster carers, working on updating marketing materials and social media as well as supporting the service in making videos for training purposes and sharing young people's stories.

Following work on interview panels, young people shared that it had built their confidence, by asking questions of the interviewees and that they had also given feedback too and helped to shape the questions for different job roles. They have also learnt what the different roles are and do and know that they are having their voices and opinions heard which makes a difference by influencing the service. They also shared that by taking part in the interview process, it enabled them to meet new people and also hear other's views and opinions. Young people also felt able to share both positives and improvements for the interviews which ensures that the processes are kept updated and gives the opportunity to make new links and networks by meeting senior staff members and other staff members from different services within the Council, which then gives them a more in-depth knowledge of how the Council works.

Young people would also like to look at a project similar to the Ask Angela Campaign to ensure children in care and care leavers feel safe in their communities, as well as looking at mental health support for children, young people and care leavers with other Apps that can be used by adults. They are also working with staff and services to arrange visits for the Young Inspectors programme and again this will further develop skills in being able to advice services on any improvements that come from the staff and young people.

The young people were thanked for their presentation and following it, the following points/issues were raised:

- There is a now a Mental Health Working Group who are looking for volunteers from LINX to be involved and to share their journeys with the Group so that they can understand a young person's experience in order to put pressure on the Group to draw up a plan which would then come to a future Corporate Parenting Board meeting. Young people agreed to be involved.
- With regards to Education, it was requested as to whether the young people presenting would be willing to liaise with officers from the Virtual School Team around the young people's voice in Education. Again, young people welcomed this invite to be involved.
- County Councillor Couperthwaite commented that at a meeting of the priority group he is involved with "Improving education, employment and training opportunities and outcomes" and how help can be given to our young people, that he would offer support on financial upskilling, CV writing skills and interview skills to support our young people and also what businesses would want from the young people. County Councillor Cosima Towneley, Cabinet Member for Children and Families also offered to support young people also if they required any help with interview skills/job applications.
- Young people were thanked for all their contributions to the services across the Council.
- From a health perspective it was noted that young people were asking for further support with mental health. Across Health as a system, they are currently looking to consult with young people, so Health can get a better understanding, shape and commission services going forward. A survey has been sent to the young people to complete. It is also hoped that there will be some consultation live events taking place and would like young people from LINX to be involved with those.
- It was also noted that the point raised by young people around Personal Education Plan (PEP) meetings and other meetings taking place during school hours, would be picked up and raised with the Service.

Resolved: That the Corporate Parenting Board:

- i) Noted the young people's update from the Care Leaver Forum.
- ii) April Rankin/Adam Riley, Child and Family Wellbeing Service will link in with the Mental Health Working Group and Virtual School's Team to enable young people to have their voices heard within these areas as requested by officers on the Board.
- iii) Brendan Lee, Children in Care and Care Leavers Service, Lancashire County Council would raise the point made by young people around not wanting Personal Education Plan (PEP) meetings and other meetings to take place during school hours, and that he would raise this with the Service.

5. Update from the Four Corporate Parenting Board Priority Groups

Andreas Feldhaar, Permanence Service, Lancashire County Council provided a verbal update to the Board on the four priority groups which are:

- i) Achieving permanence.
- ii) Improved sufficiency providing the right homes at the right places at the right time.
- iii) Improving physical, social, emotional and mental health support and outcomes.
- iv) Improving education, employment and training opportunities and outcomes.

Following, the last Board meeting in November 2021 where elected members agreed to be champions for the four priority groups, initial meetings with three out of the four priority groups have taken place which gave an opportunity to have an in-depth conversation of the specific subject each member was involved with.

Improved sufficiency providing the right homes at the right places at the right time" – Champions County Councillors Kay and Gibson

The Board were informed that the proposal for this priority is for Children in our Care (CIOC) to link in with the Commissioning Team and Fostering Service, to look at the demand and opportunities in the context of the Sufficiency Strategy. With regards to Care Leavers, the intention is to provide some political support by setting up a Corporate Parents meeting with Senior Officers and Directors from the District Housing Authorities in April 2022 and the focus will be to:

- i) Look at the allocations and provisions of homes for Care Leavers and to hold the Authorities accountable in their corporate parenting roles.
- ii) Look at the strategic development of the housing stock in their districts to meet the needs of Lancashire's Care Leavers in the future.

It was noted for that meeting with the District Housing Authorities, the views of young people will be required and to have them present at the meeting.

Improving physical, social, emotional and mental health support and outcomes – Champions County Councillors Sutcliffe and Swarbrick

The first task for this group from the Permanence Service will be to map out the service provision across Lancashire, for physical, social, emotional and mental health at the different tiers and levels and will link in with partners, to get the information together, starting with the more complexed provisions and then filtering down for the more preventative provisions at District levels and linking in with the current review of the mental health provisions that are currently commissioned from within the Permanence Service, to get an understanding of what the outcomes are and how far it has progressed, where the gaps and challenges are. Political support will be used to strengthen the partnership working to make services accessible and ensure the quality of support provided.

Improving education, employment and training opportunities and outcomes – Champions County Councillors Couperthwaite and Smith

Whilst there is already a lot of information and data with regards to education, employment and training (EET) of Children Looked After and Care Leavers, it is proposed to link back in with the Virtual School and to have a more in-depth understanding about how children and young people move through the key stages, what outcomes there are and to look at their intended destinations and compare that with national data. The main purpose of this priority is to match potential offers with the needs of the young people and look at political support to get employment and training opportunities available and ensure focus is in the right areas which are aligned to the needs of the young people. There is also an intention to link in with the Employment Support Services at Lancashire County Council to look at what employability support can be offered and also to support the Taster days for young people in care and care leavers.

It was noted that follow up meetings will take place with all the priority groups within the next 4-6 weeks.

Following the update a number of questions/points were raised:

- It was proposed that a piece of work would be developed for employers, to give them some sort of analysis and summary of the needs of the young people both in terms of the Taster days, short term and longer term employment.
- It was requested that for the next meeting, there would be a written report on what each priority group plans to cover, the actions and the outcomes that are wanted by the Board.
- There also needs to be a focus on the Taster days and continue to work to the time scales on these.
- It was noted that for the first time, in a long time, the education, employment and training figures are over 50% which is commendable progression and work to further improve this figure is ongoing.
- Preparation for young people and also the employer is key and is something that needs to be looked at across the whole cohort.
- A 16 week employability programme has commenced over the last 12 months and is delivered internally by the Employment Support Team who are also grateful for offers of support from colleagues.
- Funding from the Local Authority to support people up to 25 years of age by the Employment Support Team is a unique opportunity in Lancashire.
- It was noted that County Councillors Kay and Gibson wish to speak with young people and find out what they think their needs are with regards to accommodation for the priority group they are involved in and to work with the Leaders from the Housing Authorities on improving services offered to young people in their Districts.
- There was an aspiration that each County Councillor could unearth one opportunity/firm/business that could support a young person to give them a chance.

- Work needs to be happening with younger children in secondary schools also, so when they become a Care Leaver, they already have the support, ability and are equipped to enter into further education and/or employment.
- Each secondary school in the Authority has a named Employment Support Officer for Lancashire Children Looked After and visit schools from Year 9 and support is given around interviews, CVs, employment, further education etc and it is felt that this is the reason why in 2021 there was 95% of young people with a positive destination when leaving school. Work is continuing and it is starting to have an impact, which is good news.

- Resolved:**
- i) That the Board noted the update from the four priority groups.
 - ii) That a written report on what each priority group plans to cover, the actions and the outcomes that are wanted by the Board, will be presented to the next Board meeting.

6. Life Story Work

Janice Laing, Permanence Service, Lancashire County Council presented the Life Story work to the Board and provided a brief overview of the work. The Board were also presented with the revised policy and procedure. It was requested that the Board ratify the Life Story Work Revised Policy and Procedures to enable them to be rolled out across the County.

The Board received a presentation (attached to the minutes) which provided further details on:

- Reviewing Life Story Work
- What is Life Story Work
- Core Elements of Life Story Work
- Revised Policy and Procedure

The Board went into breakout rooms to consider the following questions:

- Q1: What do they think a non-Looked After child in a 'typical' home might need to understand their life story?
- Q2: What do they think our Looked After children and Care Experienced young people need to understand their life story?

In the breakout rooms the Board were also asked to note that as part of implementing the revised policy, a Launch Event was being planned, that aims to inspire and motivate the workforce, and were asked to discuss this also in their groups, for views and ideas on the Launch Event, so this can be achieved.

Following the discussions in the breakout rooms, feedback was received, and further details of this feedback can be found in the document attached to the minutes.

County Councillor Swarbrick offered to seek some funding for the launch event.

The Board also noted that a copy of the Life Story book was kept, either in hard copy format or electronic format.

Young people also commented that they would like to be involved in the Launch Event.

Resolved: The Board agreed to ratify and sign off of Life Story Work Policy and Procedure.

7. Any Other Business

A request was made to the Board with regards to Looked After Children and Leaving Care Team Managers and Social Workers (particularly in the Looked After Teams) observing the Board, so they have insight as to what is being discussed and agreed.

Resolved: That the Board agreed that observers from the Looked After Children and Leaving Care Teams can attend the Board.

8. Date and Time of Next Meeting

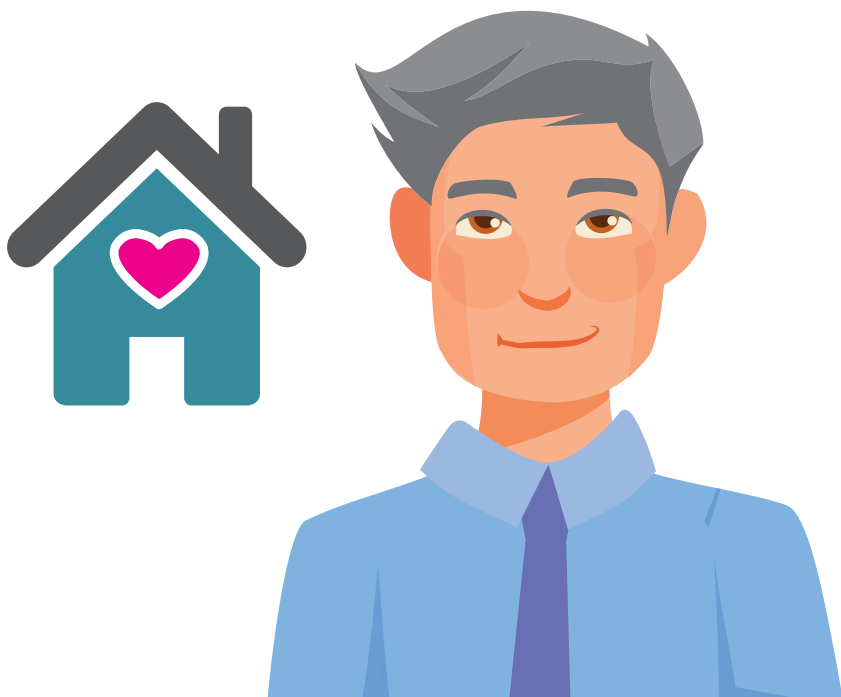
Tuesday, 15 March 2022 at 6pm, format to be confirmed.

4. WHAT ARE WE GOING TO DO?

We have identified 4 Corporate Parenting priorities:

- Achieving Permanence
- Improving sufficiency to provide the right home at the right place
- Improving social, physical, emotional and mental health support and outcomes
- Improving education, employment and training opportunities and outcomes

We have listened to children and young people and produced eight key objectives that will improve the support we provide to them under our 4 Corporate Parenting priorities in the future



OBJECTIVE 1

Children and young people have a voice in the way we deliver our services.

'To ensure that children and young people are consulted and actively participate in the decisions we make about how we deliver our services'.

'Nothing about me without me'.

We enable children and young people in our care and care leavers to engage and collaborate with us on everything that is important to them. We ensure assessments and plans are co-produced with their involvement and they have a say in the decisions we make.

www.lancashire.gov.uk/youthzone/need-to-know/powar-participation-group

www.lancashire.gov.uk/youthzone/need-to-know/linx-children-in-care-council

www.lancashire.gov.uk/youthzone/need-to-know/care-leaver-forum

www.lancashire.gov.uk/youthzone/need-to-know/corporate-parenting-board

OBJECTIVE 2

Children and young people will have a sense of belonging, security, continuity, support and stability.

‘Working with our partners to build strong communities for our children and young people in our care and care leavers to live in’.

‘Achieving permanence is at the heart of every decision made by us and our partners’

We work with our partners to achieve and maintain all types of permanence for children and young people in our care and Care Leavers to ensure they achieve their potential – as if they were our child.

We have embedded a trauma informed and strength-based approach in our practice and encourage our partners to do the same and ensure children and young people in our care and care leavers are involved in the development of multi-agency strategies to achieve permanence and improve permanence practice.

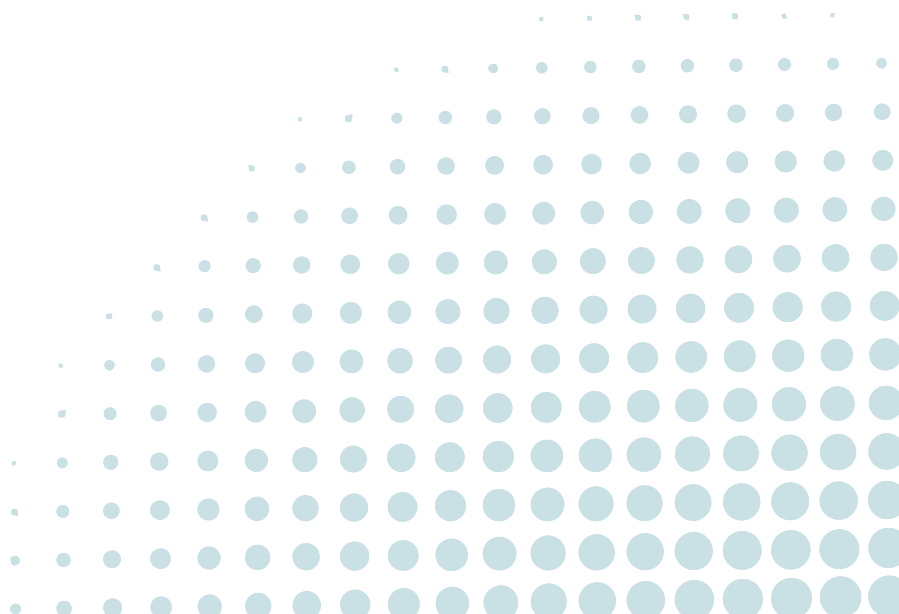
We have revised our Life Story Policy and are working with our partners to embed a more holistic and continued approach to Life Story.

Children and young people in our care are supported to maintain connections to those important to them not just through family time and care leavers are supported to build strong and effective personal support networks. It is important that wherever children and young people live they are encouraged and supported to experience positive social and leisure activities to feel included in their local communities.

Care Leavers are provided with a Local Offer that is regularly reviewed and we will be working with the Care Leaver Covenant to improve the offer from our partners to care leavers across the region.

We stand by our Corporate Parents Promise and continue to build a stronger corporate family for the benefit of the children and young people in our care and care leavers

www.lancashire.gov.uk/youthzone/care-leavers-local-offer



OBJECTIVE 3

Children and young people are well prepared and supported when leaving care.

'to ensure that all care leavers feel supported and can access a range of services to promote their continued wellbeing into adulthood'.

'to enable care leavers to set up and maintain their own home'.

Young people in our care will be provided with a Personal Advisor when they are 16 years old and be supported by their Social Worker from the Children in Our Care Teams, Personal Advisor from the Leaving Care Teams, carers and the professionals around them to develop the relevant knowledge and skills needed to leave care as a young adult.

Independence preparation includes general and practical preparation as well as social/emotional support and financial education. We provide a framework that helps young people to develop these life skills and provide financial assistance including paying their council tax until their 25th birthday.

During the pandemic, we provided additional financial assistance to care leavers by paying a Leaving Care Top Up in line with the increased Universal Credit rate and ensured young people have the technology to stay connected with those important to them

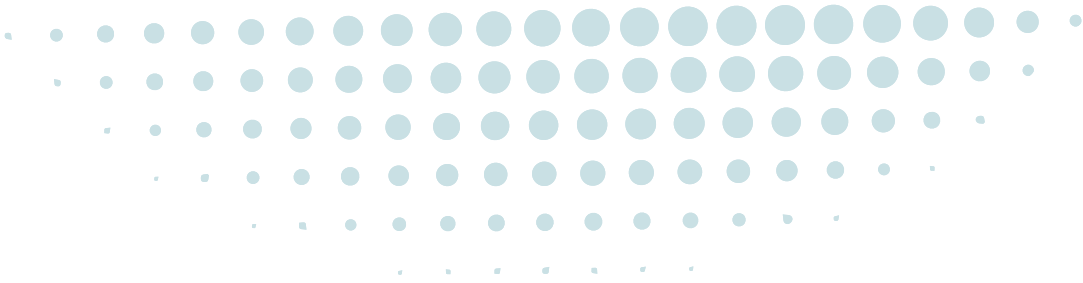
OBJECTIVE 4

Children and young people will have a suitable, safe and lasting home to live and be cared for.

'To ensure that the children and young people we care for have a range of suitable and appropriate accommodation to meet their immediate and long-term needs'.

All children and young people in care and care leavers are provided with exceptional love, care and kindness where they live and from the professionals around them.

We work with our partners to ensure the children and young people in our care and leaving care are provided with the right home, at the right place and at the right time. We have improved our permanence process to provide the children and young people in our care with a lasting home.



For children and young people who can return to live with their families safely are well supported to achieve this.

Young people are provided with the right housing provision to support their pathway into independence, and we work with District Housing Authorities and accommodation and housing providers to achieve this.

Care Leavers have continued support to manage and maintain their home permanently in adulthood and feel safe where they live. We support young people in foster care to continue with their carers under Staying Put and have improved out Staying Put offer.

We have a Joint Housing Protocol between Lancashire County Council and the 12 District Councils to support Care Leavers securing a safe, suitable and permanent home. We have two Housing Advisors to support the Leaving Care Teams and we are also working with the Ministry for Levelling Up, Housing and Communities to prevent homelessness.



The health and wellbeing of our children and young people in care and care leavers will be a priority for everyone.

‘To improve the health and wellbeing of the children and young people we care for’.

Health partners have a significant role in identifying, delivering and improving the health of children and young people who are looked after. An initial health assessment is undertaken when a child/ young person is new to care to identify any health needs, and dependant on their age a further review assessment is carried out 6 monthly or annually. Children looked after, can have complex health needs, both physical and psychological. The Looked After Children Nurses liaise with the wider health economy, such as paediatric therapy; dental services; GPs; specialist services e.g. CAMHS, as well as other agencies and non-statutory organisations to ensure health needs are met in the best way for the individual child or young person.

At the final health assessment, the young person leaving care will receive a summary of health needs letter, containing a summary of recent health issues, immunisation status, details of key health contacts, e.g. GP, LAC Nurse, sexual health services.

From listening to young people’s feedback, we are currently working with Adult Services to ensure that any continuing support that is needed for our young people is planned before they become adults.

OBJECTIVE 6

Children and young people are protected from harm and risk of exploitation.

'To ensure that children are protected from harm and exploitation and ensure that they are provided with support to overcome any pull factors that would lead them to being exploited'.

L Partner agencies work together to ensure a coordinated response to children and young people most at risk of criminal or sexual exploitation, missing from home and trafficking.

All children and young people in our care that are subsequently identified as being at risk of missing, are offered a comprehensive package of support that reflects their individual needs and missing from home return interviews are undertaken. Monthly Missing from Home Panels are held, where the young people most at risk are discussed in a multi-agency forum to inform the care plan.

Social Workers from the Child Exploitation Teams work with children and young people in care and professionals involved to address pull and push factors and Multi-agency Child Sexual Exploitation (MACSE) meetings are held monthly and interlinked with the Missing from Home Panels and Missing Education Panels.

Children's Services, the Youth Offending Team, Lancashire Constabulary and the Crown Prosecution Service have joint working arrangements to divert and prevent children looked after

from offending behaviour and entering or escalating through the justice system.

Children and young people in care and Care Leavers can be vulnerable to a variety of different types of exploitation like emotional exploitation or financial exploitation and are developing a comprehensive safeguarding protocol for Care Leavers to provide the same level of safeguarding support as for children and young people in our care



OBJECTIVE 7

Children and young people will be supported to achieve their own goals and be ambitious in education, employment and training.

'To close the achievement gap between those children and young people that the local authority cares for and those that are cared for by their own families'.

Young peoples' likelihood of success in life is much better if they are supported into education, employment, and training. We recognise that children and young people in our care and care leavers will often need additional access to these opportunities and we are committed to ensuring that this support is available.

We are aware that many children and young people have gaps in their education, and we are keen to ensure the children in our care are confident to access a range of educational settings, achieving success in whatever they choose to do. We want all our children to be their best.

The educational attainment of our children at Key Stage 1 and 2 is improving and generally in line with the national data. The attainment of our Key Stage 4 Year 11 leavers had been below the national average for several years. However, in 2019 and 2020 our average Attainment 8 and Progress 8 score has improved and is much closer to the national average and is closing the gap between ourselves and other similar Local Authorities. The percentage of our young people attaining Grade 4+ in English and Maths improved at a greater rate than the national average or regional LA's. However, we know there is still much to do to enable our young people to reach their potential.

The Lancashire Virtual School for children in our care and care leavers aims to provide support and challenge to schools, education providers, social work teams, and other key partners. The Virtual School monitors and tracks attendance, progress and outcomes for our children and the quality of Personal Education Plans. This is supported through a new Personal Education Plan document.

Advice, guidance, and training sessions are provided to carers and parents to help them support children in our care with learning. The Employment and Support Team (part of the Virtual School) support children in our care and care leavers aged 14-25 years with the next steps into employment, apprenticeships, training, volunteering

and work experience. We work in partnership with the Children in Our Care and Leaving Care Teams to embed Children's Services EET Strategy as it is our aim to increase opportunities for the children in our care and care leavers across Lancashire.



OBJECTIVE 8

Having big dreams and goals, support our children and young people to achieve their dreams and goals, and celebrate their achievements

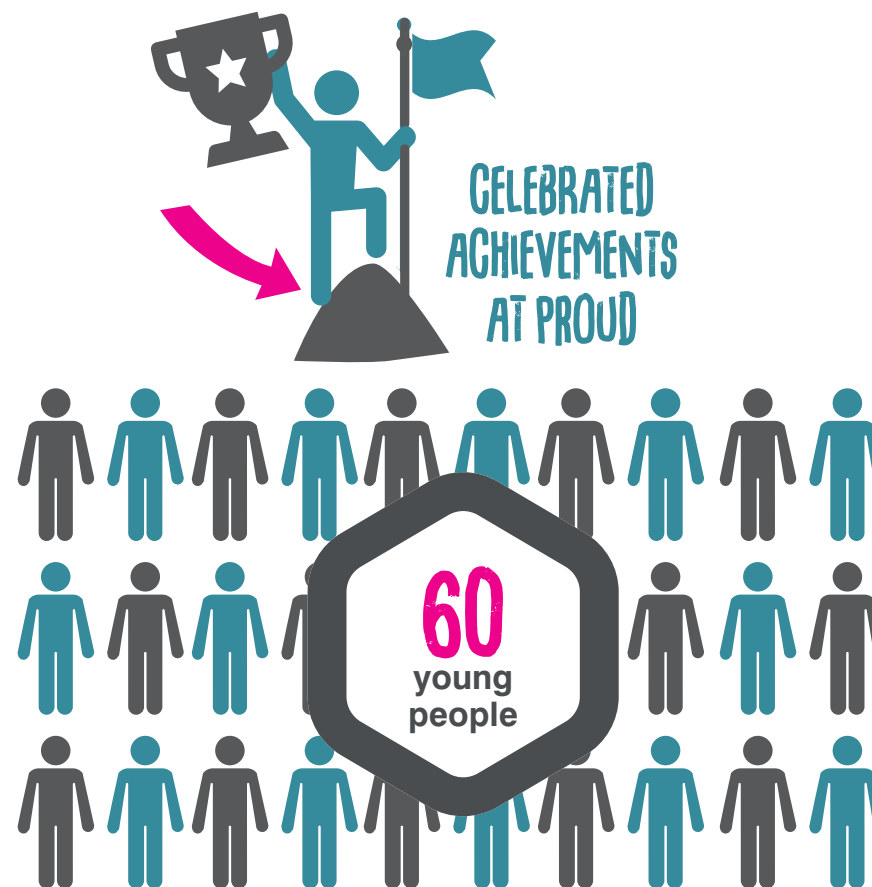
'To ensure that the children we look after and have looked after, are recognised for their achievements and successes'.

Children in our care and care lavers have a variety of opportunities to celebrate their achievements. PROUD is the biggest event of the year with young people nominated by a wide range of key workers and agencies. They are an opportunity for Corporate Parents to come together with our children and young people to celebrate their achievements. Approximately 60 young people and their guests attend PROUD each year. It serves as a timely reminder of our children and young people's resilience, many talents and successes despite the adversity and challenges many have overcome.

Due to Covid, we have not been able to host the PROUD Awards in 2020 and 2021 but planning for the next PROUD Awards have resumed. This annual event will continue to celebrate our young people and show them how proud we are.

We also celebrate our care leavers as part of National Care

Leaver's Week with every year where we bring together young people, councillors and professionals for a themed event co-produced with our young people.



LANCASHIRE'S PROMISES

CHILDREN IN OUR CARE & CARE LEAVERS

FROM YOUR CORPORATE PARENTS

These Promises have been made by Lancashire County Council and our partners to children looked after and care leavers. We promise to do our best to help you achieve your full potential, we are committed to involving you in any decisions that affect your life, we will ask you what you think, we will listen to you and take your views into account. This is part of our commitment to making sure that children and young people are valued in every aspect of their lives.



KEEP YOU SAFE AND HAPPY WHERE YOU LIVE

REGULAR CONNECTIONS WITH IMPORTANT PEOPLE




KEEP THE SAME WORKER
(unless absolutely necessary for you to change)

HELP YOU TO STAY IN TOUCH



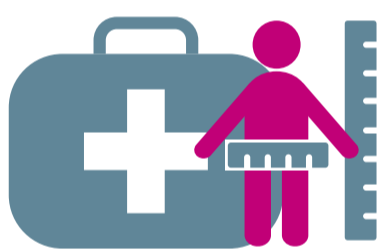
SUPPORT YOU TO HAVE A SAFE & LASTING HOME

MAKE SURE YOUR VOICE IS HEARD




LISTEN TO YOU

INVOLVE YOU



ENCOURAGE YOU TO HAVE GOOD PHYSICAL & EMOTIONAL HEALTH

GET SUPPORT FROM OUR PARTNERS

HELP YOU TO DO THINGS WELL INDEPENDENTLY



CELEBRATE YOUR ACHIEVEMENTS



PLACES TO MEET MEET YOUR RELIGIOUS AND CULTURAL NEEDS



HOBBIES

continue doing the good things you do
TRY SOMETHING NEW

MEET NEW PEOPLE



GETTING INVOLVED

There are lots of different ways you can get involved in having a say about the service you receive. You may have suggestions about what we could do differently or even what's going well for you, which could have a positive impact for other children in our care and care leavers.

You might be interested in joining Lancashire's Children in Care Council (LINX and POWAR) or the Care Leaver Forum. The groups are made up of children who are in our care or care leavers. It is another way of getting your voice heard. They provide a great opportunity for you to talk about issues affecting children in our care and care leavers which can be fed back to the Corporate Parenting Board.

The Corporate Parenting Board is there to make sure the council does a good job for you. Attending the Corporate Parenting Board is another way you can raise issues for children in our care and care leavers. Get in Touch with LINX for more information.

Want to meet an Independent Visitor?

An Independent Visitor (IV) is an adult volunteer who befriends and develops a long-term friendship with a young person in care. This can involve helping young people to develop new interests, skills and hobbies or going on outings such as to the cinema, bowling or just a walk in the park.

More information on the Independent Visitor service is on the [National Youth Advocacy Service \(NYAS\)](#) or call **0808 808 1001**.

Need an Independent Advocate?

This service helps children and young people in our care and care leavers to have a say about what happens in their lives. All young people in the care of Lancashire County Council, aged 0-18 years are eligible for the service, including those living at home or with friends and extended family. We also work with care leavers up to the age of 25.

An advocate can support you:

- If you feel your views are not being listened to and want someone on your side
- If you are unhappy with the way you are being cared for
- If you are angry or upset about something that is happening to you
- If you feel you haven't been treated fairly
- If no one is telling you what is happening about your situation
- If you haven't been involved in decisions that are being made about you
- To take part in meetings and reviews

Contact the **National Youth Advocacy Service (NYAS)** on **0808 808 1001** or ask a professional or friend to contact them on your behalf.

HOW TO MAKE A COMPLAINT

If you have any concerns about the service and support you are receiving then please raise this as soon as possible with your social worker, personal adviser or their manager, hopefully this will be resolved quickly.

Or you may want to contact the National Youth Advocacy Service (NYAS) to request an advocate, phone **0808 808 1001**.

However, if you do want to make a complaint contact the Customer Service Centre on **0300 123 6720**.



Mind Of My Own One App

Mind Of My Own One is a way for children in care and care leavers to prepare for meetings, raise problems or ask for something.

You can download Mind Of My Own One as an App for Android or Apple devices or use it on any internet browser device such as a tablet or Xbox.

You can ask for the information you put in to go to a worker of your choice, for example your social worker, personal adviser or the complaints team.

Mind Of My Own One is not an instant messaging service and you will not receive a response back through the App. The information gets picked up and passed on to the worker during normal working hours, Monday to Friday. The worker will then contact you by phone or email as usual.

For more information see the [Mind of My Own website](#).

LANCASHIRE'S
PROMISES
CHILDREN IN OUR CARE & CARE LEAVERS



Front Door, Assessment and Adolescent Services (FAAS)

Chris Coyle Head of Service

Agenda Item 5

Lancashire Front Door

- Lancashire's Front Door is the MASH based at Lancashire House in Accrington
- Within the MASH are Social Work teams and also Early Teams .
- Also sat within the MASH are colleagues from the Police and from health services.

Lancashire Front Door

- If someone feels a child or family need help, or need to be safeguarded they contact the MASH
- If it is an immediate safeguarding concern or a member of the public they can phone and state their concerns.
- If it is a less immediate concern they should complete a request for support form seeking support

Lancashire Front Door

- The aim at the Front Door in Lancashire is to ensure that information is shared appropriately and from that children and families are supported by the right service, at the right level of intervention, as speedily as possible.

Lancashire Front Door

- The information in the Request for support form is reviewed and information is shared between the partners to see what the issues are and to decide who is best placed to support the family.
- That could be Childrens Social Care, it could be support from Lancashire's own Ealy Help Teams or it could be support from another service.

Assessment Teams

- If its felt that a Childrens Social Care assessment is needed the child is passed on to the Duty and Assessment teams, which are geographically based around the county.
- These teams work with families and undertake assessments, again involving information from the family and from partners to plan how we support those children.

Assessment Teams

- There is a legal framework that dictates how support should be offered to children who are found to need support from a Social Worker
- Children Act 1989, Section 17 if they are believed to be in need and Section 47 if they are believed to be at risk of harm.

Assessment Teams

- The response at Section 47 depends on the outcome of enquires, but includes children being supported being supported either through a Child Protection Plan, or if the risks are so high, through being removed from their parents care with the agreement of the court.

Adolescent Services

- In Lancashire's Childrens Social Care our adolescent Services incorporate two distinct elements.
- Our Contextual Safeguarding Teams and our Child and Youth Justice Teams.

Adolescent Services, Contextual Safeguarding.

- Contextual Safeguarding has two elements within it.
- The Exploitation Team, that support children at risk of Criminal and/or Sexual exploitation or with issues around modern slavery.
- The Extra Familial Harm Team support children where the risks or issues are not linked to how they are supported by their parents, for example mental health issues.

Adolescent Services, Contextual Safeguarding.

- The children we support in the Extra Familial Harm team are often the children with the most complex needs and issues.
- They are children who frequently have Autistic Spectrum Conditions, and other elements that mean support to them has to be really tailored and individualised.

CYJS

- CYJS is the name we give to youth offending services in Lancashire.
- The aim of this service is support children who have come into contact with youth justice, either through actual convictions or out of court disposals
- The aim is to ensure that these children do not reoffend
- However we have also developed a services within CYJS whose aim is to prevent children coming into contact with the Police and justice services in the first place

FAAS

Any questions?

